

# Welcome to Herne!



Kommunales  
**INTEGRATIONS** | NRW  
Management

 **Stadt Herne**

# Welcome to Herne!

This brochure will help you settle in Herne.  
Do you have any questions or problems?  
Then you can contact following offices:

## *Eickel*

### **DRK KV Herne und Wanne-Eickel e.V.**

Hauptstr. 166  
44652 Herne  
Phone: 0 23 25 / 9 69 15 - 73 oder - 76

## *Wanne*

### **PLANB Ruhr gGmbH**

Hauptstr. 221  
44649 Herne  
Phone: 0 23 25 / 6 99 91 - 94 oder - 95

## *Stadtgebiet Herne*

### **Stadt Herne**

Shamrockring 1 (Haus 4)  
44623 Herne  
Phone: 0 23 23 / 16 47 - 11 oder - 03 oder - 05

## *Sodingen*

### **AWO Ruhr-Mitte**

Lützowstr. 2  
44628 Herne  
Phone: 0 23 23 / 95 24 - 18 oder - 19

## *Mitte*

### **Caritasverband Herne e.V.**

Schulstraße 16  
44623 Herne  
Phone: 0 23 23 / 9 29 60 - 90 or - 9 40

Or send an email to: [kim@herne.de](mailto:kim@herne.de)

**We wish you a good start in Herne!**



### *Emergency numbers*

**Police**

Phone: 110

**Ambulance**

Phone: 112

**Medical On-Call**

Phone: 116 117

**Fire Department**

Phone: 112

**Emergency Doctor**

Phone: 112

**Dental Emergency Service**

Phone: 0 18 05 / 98 67 00

### *Helpline for violence against women*

Phone: 116 016



### *Pharmacy Emergency Service*

Which pharmacy has emergency service today?

# Content

<b>1. Arriving in Herne</b>	<b>6</b>
1.1 Registration	6
1.2 Registration with the immigration office	6
1.3 Opening a bank account	7
1.4 Broadcasting fee	7
<b>2. Living in Herne</b>	<b>8</b>
2.1 Finding an apartment in Herne	8
2.2 Housing eligibility certificate (WBS)	8
2.3 Senior living	9
2.4 Tips for peaceful coexistence	9
<b>3. Learning German</b>	<b>10</b>
<b>4. Work and training</b>	<b>11</b>
4.1 Job placement	11
4.2 Recognition of professional qualifications from abroad	12
<b>5. Health</b>	<b>13</b>
5.1 Health insurance	13
5.2 Important addresses and phone numbers	14

<b>6. Families in Herne</b>	<b>15</b>
6.1 Early help	15
6.2 Pregnancy	15
6.3 Birth-related matters	16
6.4 Welcome visits	16
6.5 Parental allowance and child benefit	16
6.6 Child daycare (KiTa)	17
6.7 School	18
6.8 Education and participation package (BuT)	18
6.9 Parent education programs	19
<b>7. Counseling centers for new immigrants</b>	<b>20</b>
7.1 General counseling	20
7.2 Counseling services for women	23
<b>8. Mobility in Herne</b>	<b>24</b>
8.1 Driving in Germany	24
8.2 Public transportation	24
8.3 Cycling	25

# 1. Arrival in Herne



## 1.1 Registration

Have you moved into a new apartment?  
Then you must register within two weeks.  
Go to a Citizen's Registration Office in person,  
but make an appointment beforehand.



### You will need:

- A certificate from the landlord, „Wohnungsgeberbestätigung“ (Confirmation of Residence). The landlord must complete and sign the certificate.
- an identity card or passport for each person in the apartment.
- For people from other countries, a valid passport or a replacement.
- For children under 18: passport or birth certificate.

**Tip: Bring your family book.**



## 1.2 Registration at the Immigration office

Are you new to Germany?  
If you are not EU-citizen, then you must register with the  
Immigration office.



### 1.3 Opening a bank account

You need a bank account.

You can choose your own bank.

#### For this, you will need:

- A valid passport
- A residence permit
- Your registration certificate from the citizens' registration office
- Proof of income (only for some banks)



### 1.4 Broadcasting fee

Everyone in Germany pays a fee for radio and television.

This fee is called the broadcasting fee.

You can be exempted from the broadcasting fee, in which case you don't have to pay anything. Exemption is only possible in special cases. You must fill out a form for exemption.



# 2. Living in Herne

## 2.1 Finding an apartment in Herne

You have to find your own apartment.  
There are many websites with apartment listings.



## 2.2 Housing eligibility certificat (WBS)

If you earn little money, you can apply for a WBS.  
This allows you to rent an apartment at a lower price.

### You must:

- Be over 18 years old
- Have a residence permit
- Not earn too much

### Please make an appointment!

Phone: 0 23 23 / 16 31 68



## 2.3 Senior living

Are you older?  
Do you need an apartment without stairs?  
You can get all the information you need  
at the housing advice center at the  
Diakonisches Werk  
(Civil Service Organization).



## 2.4 Tips for peaceful coexistence

Many people live together in Herne.

### Important:

- Be considerate of one another
- Follow house rules

This will ensure peaceful coexistence.

### House Rules

You will receive house rules from your landlord.

Read these house rules carefully and observe the safety rules:

- Keep the escape route clear
- Do not store garbage in the hallway

### Quiet Times

- Quiet hours are from 10 p.m. to 6 a.m.
- No loud noise during this time

### Waste

- Only throw garbage in the bins
- Do not leave anything next to it
- The lid must be closed



# 3. Learning German



## Would you like to learn German?

Then you can attend an integration course. To take the course, you need a permit or authorization from the Federal Office for Migration and Refugees (BAMF).

The Adult Education Center (VHS) in Herne also offers language courses for beginners.

### Herne Mitte

VHS im Kulturzentrum  
Willi-Pohlmann-Platz1  
44623 Herne

### Wanne-Eickel

VHS im Haus am Grünen Ring  
Wilhelmstraße 37  
44649 Herne



### Advice

Fachbereich Integration  
Rademachers Weg 15  
44649 Herne  
Phone: 0 23 23 / 16 45 89  
[integration@herne.de](mailto:integration@herne.de)



# 4. Work and training



## 4.1 Job placement

Are you allowed to work?  
That depends on your residence permit.  
Check with the immigration office.

### *Assistance with job search, application and further training*

#### **AiKo-Süd - Work Integration through skills development in Wanne- Süd**

Hauptstraße 179  
44652 Herne  
Phone: 01 59 / 04 30 89 41 or 01 52 / 04 27 62 59  
Phone: 01 52 / 09 30 78 90 or 01 59 / 04 23 15 17

#### **GISAA - Refugees in School, Training, and Work**

Schulstr. 16  
44623 Herne  
Phone: 0 23 23 / 9 29 60 97 or 0 23 23 / 9 29 60 25

#### **NRW.Integrativ**

Shamrockring 1 (Haus 4)  
44623 Herne  
Phone: 0 23 23 / 16 47 05  
*[kim@herne.de](mailto:kim@herne.de)*

#### **Agentur für Arbeit / Employment Agency**

Markgrafenstraße 9  
44623 Herne  
Phone: 0 23 23 / 59 55 00 or 0 23 23 / 59 50  
*[herne@arbeitsagentur.de](mailto:herne@arbeitsagentur.de)*

#### **Jobcenter/Integration Point**

Heidstraße 2  
44649 Herne  
Phone: 0 23 25 / 63 70



## 4.2 Recognition of professional qualifications from abroad

Are you allowed to work?

Have you obtained a professional qualification abroad?

Or a university degree?

Is your qualification also valid in Germany?

*Submitting applications, having qualifications recognized, searching for further training*

### **Jobcenter/Integration Point**

(for Jobcenter customers only)

Heidstraße 2

44649 Herne

### **VHS im Haus am Grünen Ring**

Wilhelmstraße 37

44649 Herne

Phone: 0 23 23 / 16 31 86



# 5. Health



## 5.1 Health insurance

In Germany you must have a health insurance.

To do this you must choose a health insurance provider and seek local advice.

## 5.2 Important addresses and phone numbers

### Hospitals

#### St. Anna Hospital Herne

Hospitalstraße 19

44649 Herne

0 23 25 / 98 60

[info@annahospital.de](mailto:info@annahospital.de)

#### Marien Hospital Herne

Universitätsklinikum der Ruhr-Universität Bochum

Hölkeskampring 40

44625 Herne

Phone: 0 23 23 / 49 90

#### St. Marien Hospital Eickel

Marienstraße 2

44651 Herne

Phone: 0 23 25 / 37 40

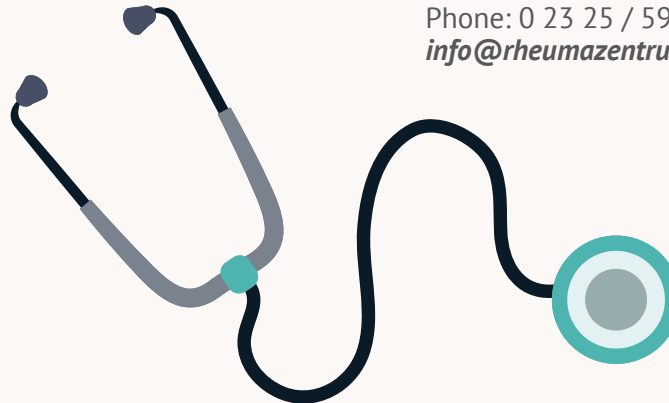
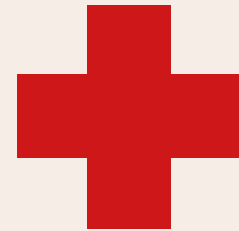
#### Rheumazentrum Ruhrgebiet

Claudiusstraße 45

44649 Herne

Phone: 0 23 25 / 59 20

[info@rheumazentrum-ruhrgebiet.de](mailto:info@rheumazentrum-ruhrgebiet.de)





### *Emergency numbers*

**Police**

Phone: 110

**Ambulance**

Phone: 112

**Medical On-Call**

Phone: 116 117

**Fire Department**

Phone: 112

**Emergency Doctor**

Phone: 112

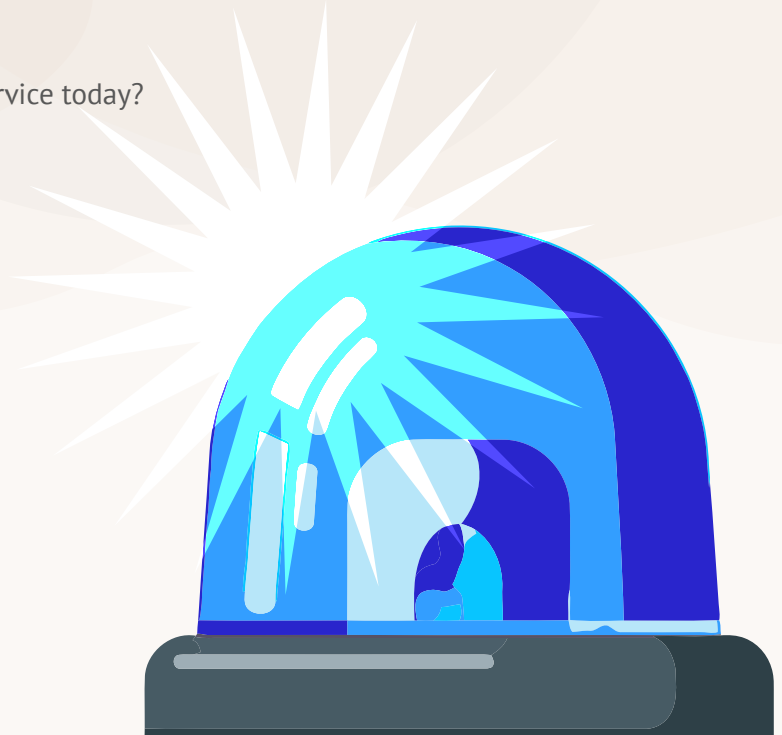
**Dental Emergency Service**

Phone: 0 18 05 / 98 67 00



### *Pharmacy Emergency Service*

Which pharmacy is open for emergency service today?



# 6. Families in Herne



## 6.1 Early help

**Early help is a support for parents and children:**

- From pregnancy onwards
- Until the child is 3 years old

**You will receive support:**

- If you have questions about parenting
- If you are overwhelmed
- If you have problems with your partner
- If your child cries a lot

## 6.2 Pregnancy

Are you pregnant?

Or planning a pregnancy?

*These services are available to you*



**Pregnancy and  
Pregnancy Conflict  
Counseling Center**

Rathausstraße 6

44649 Herne

Phone: 0 23 23 / 16 32 53

*info-schwangerenberatung@herne.de*



**Marriage, partnership and  
pregnancy counseling**

Evangelische Beratungsstelle Diakonie

Schäferstraße 8

44623 Herne

Phone: 023 23 / 5 30 48



### 6.3 Birth-related matters

Your gynecologist will monitor your pregnancy. WA midwife can also accompany you during the pregnancy and and until the baby is 8 weeks old.

### 6.4 Welcome visits

The Family Office visits

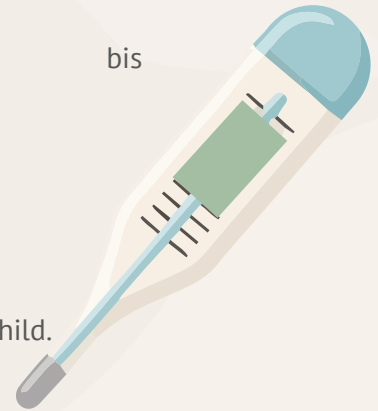
- families after the birth of a child in Herne
  - or newly arrived families with a child under the age of 3 years
- You will receive a letter with an appointment.

In addition to a variety of information, you will also receive a gift for your child.

Phone: 0 23 23 / 16 20 03 or 0 23 23 / 16 30 72

***familienbuero@herne.de***

bis



### 6.5 Parental allowance and child benefit

You receive parental allowance if you have a child, live in Germany, and have a secure residence permit.

Inquire at the Parental Allowance Office:

#### **Stadt Herne**

Fachbereich Kinder-Jugend-Familie

Elterngeldstelle

Hauptstraße 241

44649 Herne

Phone: 0 23 23 / 16 16 46

***eltern geld@herne.de***



### **Child Benefit**

The government provides benefits for children up to the age of 18. Sometimes up to the age of 25 if the child is still in school or undergoing training.

**Apply at the Family Benefits Office:**

#### **Familienkasse Nordrhein-Westfalen Nord**

Universitätsstraße 66  
44789 Bochum  
Phone: 08 00 / 4 55 55 30



### **6.6 Child daycare (KiTa)**

Herne offers a variety of childcare options.  
Would you like your child to attend a daycare center?

#### **Is your child under 3 years old?**

Then you can have your child cared for by a daycare provider.

Inquire here:



#### **Herner Tageseltern e.V.**

Horsthauser Straße 171, 44628 Herne  
Phone: 0 23 23 / 3 98 60 54  
*info@herner-tageseltern.de*

#### **Fachbereich Kinder-Jugend-Familie**

Kleine Kita Herne  
Rathausstraße 6, 44649 Herne  
Phone: 0 23 23 / 16 31 76



**Language courses with childcare are available.  
Ask at the language schools.**



## 6.7 School

Children age 6 and older must attend school.  
Has your child attended school in Germany for less than two years?

Then register here and make an appointment:

### Stadt Herne

Fachbereich Integration  
Shamrockring 1 (Haus 4)  
44623 Herne  
Phone: 0 23 23 / 16 38 57 or 0 23 23 / 16 38 58  
[seiteneinstieg@herne.de](mailto:seiteneinstieg@herne.de)

If your child has lived in Germany for more than two years,  
please contact a school near you directly.



## 6.8 Education and participation package (BuT)

Families who don't have much money receive support for school supplies,  
tutoring, travel expenses, or excursions for their children.  
All multilingual information and applications can be found at:

### Stadt Herne

Team Bildung und Teilhabe  
[bildungundteilhabe@herne.de](mailto:bildungundteilhabe@herne.de)  
Phone: 0 23 23 / 16 33 99

### Jobcenter Herne

Team Bildung und Teilhabe  
[jobcenter-herne.Bildung-und-Teilhabe@jobcenter-ge.de](mailto:jobcenter-herne.Bildung-und-Teilhabe@jobcenter-ge.de)  
Phone: 0 23 25 / 63 70





## 6.9 Parent education programs

Herne offers many opportunities for newly arrived parents and their children.

You have the opportunity to meet in groups at your child's school.  
Ask if your school organizes „parent cafés“ (Elterncafe) or „father groups“ (Vätergruppen)

Do you have children aged 1 to 3 who don't have a daycare spot?  
Then you can attend a parent-child group (Eltern-Kind-Gruppen).

Is your child between 4 and 6 years old and attends a daycare center?  
Ask at your daycare center about the „Rucksack Groups“ project.  
The „Rucksack Groups“ promote multilingualism.

For more information, use the QR code.



# 7. Counseling centers for new immigrants

There are many counseling centers in Herne.  
Each center offers its own services. Here is an overview of the centers.

## 7.1 General counseling

### **AWO Unterbezirk Ruhr-Mitte**

Breddestr. 14  
44623 Herne



- Migration Advisory Service for Adult Immigrants (MBE)
- Youth Migration Service (JMD) for individuals aged 14-27
- Regional Refugee Advisory Service for individuals with a residence permit or tolerated status
- Case Management (KIM)

### **Caritasverband Herne e.V.**

Schulstr. 16  
44623 Herne



- Counseling and Strengthening (BeSt) - Contact points for immigrants from Southeastern Europe
- GISAA - Refugees in School, Training, and Work
- Social Counseling for Refugees
- Case Management (KIM)

## Deutsches Rotes Kreuz

Berliner Platz 4  
44623 Herne

Harkortstr.19  
44652 Herne



- Migration Counseling for Adult Immigrants (MBE)
- Case Management (KIM)
- Regional Refugee Counseling for Persons with Residence Permits or Toleration

## Fachstelle Eine Welt

Overwegstr. 31  
44625 Herne



- Counseling center for victims of human trafficking
- Departure and prospects counseling
- Regional refugee counseling

## Gesellschaft freie Sozialarbeit

Corneliusstr. 19  
44653 Herne



- Refugee counseling
- Refugee support

## Jüdische Gemeinde Bochum-Herne-Hattingen

Westring 151  
44629 Herne



- Migration counseling for adult immigrants (MBE)

### **IFAK e.V.**

Bahnhofsplatz 15  
44629 Herne

- Counseling and Empowerment - Contact Points for Immigrant Citizens from Southeast Europe



### **PlanB**

Hauptstr. 221  
44652 Herne

- Service center against discrimination
- Migration counseling for adult immigrants (MBE)
- Regional refugee counseling
- Counseling and strengthening (BeSt) - Contact Points for Immigrants from Southeast Europe
- Case Management (KIM)



### **Fachbereich Integration**

Shamrockring 1  
44623 Herne

- Case management (KIM)
- Residential support for citizens from Southeast Europe
- School entry counseling
- Integration scout



## 7.2 Counseling services for women

### Office for Equality and Diversity

Berliner Platz 9  
44623 Herne

- Separation and divorce
- Single parents
- Professional issues

### Weißer Ring

Phone: 01 51 / 55 16 49 35  
***herne@mail.weisser-ring.de***

- Victim support

### Schattenlicht

Straßburger Str. 39  
44623 Herne

- Physical/mental violence
- Domestic violence
- Sexual violence

### Helpline for violence against women

Phone: 11 60 16



# 8. Mobility in Herne



## 8.1 Driving in Germany

### Important:

There are specific driving regulations in Germany.



### Would you like to register a car?

Then contact the vehicle registration office in Herne.



### Or do you have questions about your driver's license?

Then contact the driver's license authority in Herne.



## 8.2 Public transportation

### Would you like to travel by bus and train in Herne?

On the HCR-Public transport website you will find:

- Offers and tickets
- Timetables
- Rules
- Further Informations





### 8.3 Cycling

#### Would you like to cycle in Herne?

On the website of the city administration you will find:

- Traffic regulations
- Tour suggestions
- Where to rent bikes







## Contact

If you have any questions, please send an email:  
***integration@herne.de***

## Impressum

Herausgeber:

**Stadt Herne – Der Oberbürgermeister**  
Fachbereich 34 Integration – KI  
Kommunales Integrationszentrum der Stadt Herne  
Postfach 10 18 20  
44621 Herne  
Februar 2026

Illustrationen:  
AdobeStock, Frank Dieper